

Wednesday, June 17

Relay from Zürichhorn to Rapperswil

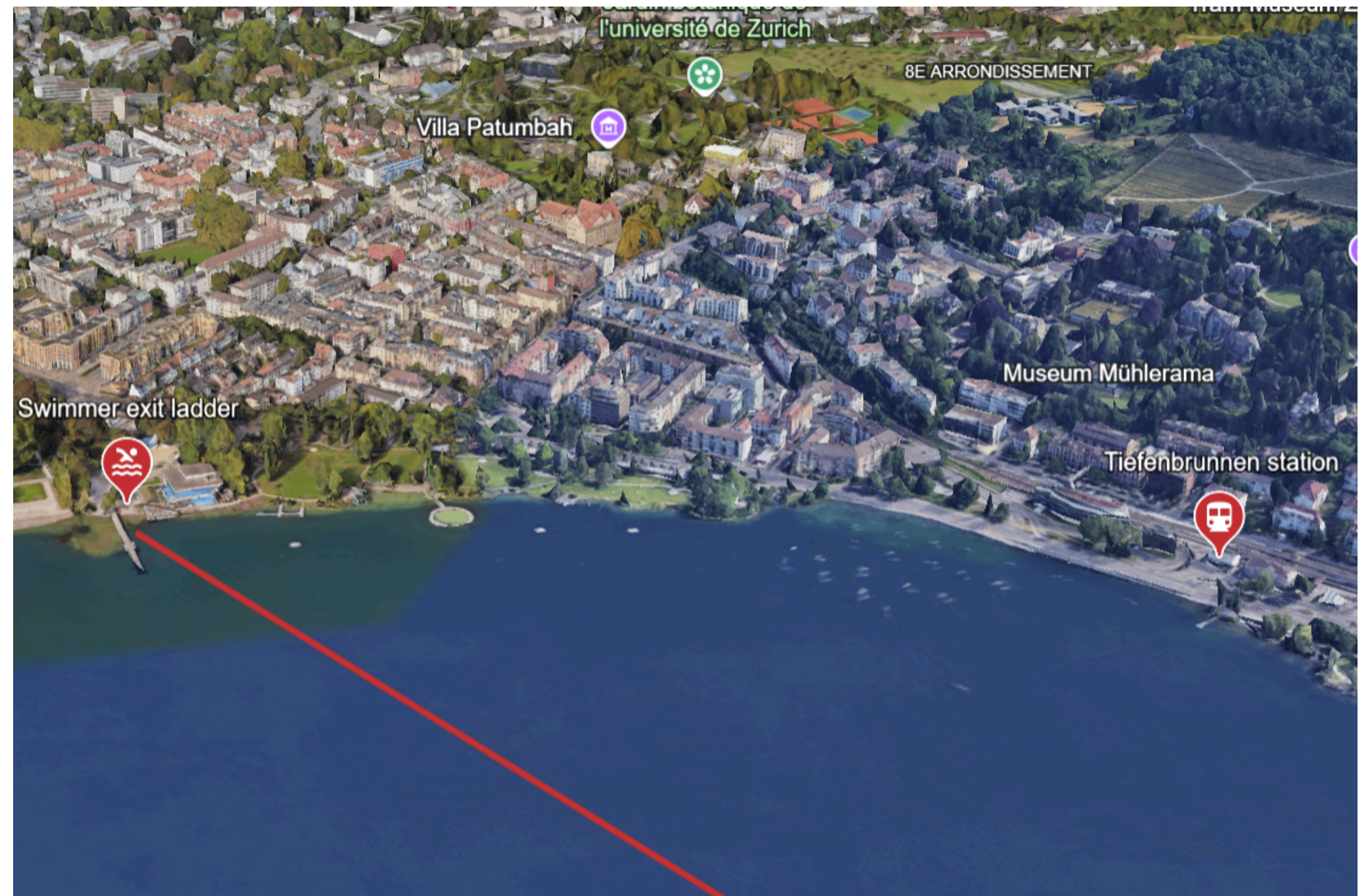


RELAY ZÜRICHHORN → ERLNBACH

Departure Zürichhorn

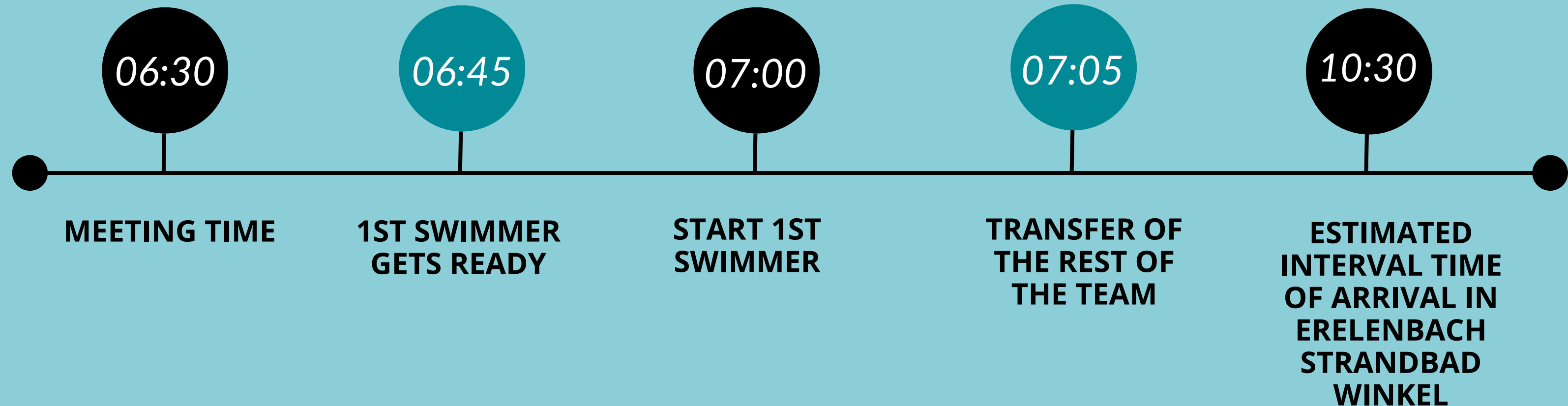
- Train station Tiefenbrunnen (14 min. walk)
- Parking (1 min. walk)

[Google Earth view](#)



Wednesday, June 17th

RELAY ZÜRICHHORN – ERELENBACH



RELAY ERLENBACH → MEILEN

Departure Erlenbach - Strandbad Winkel

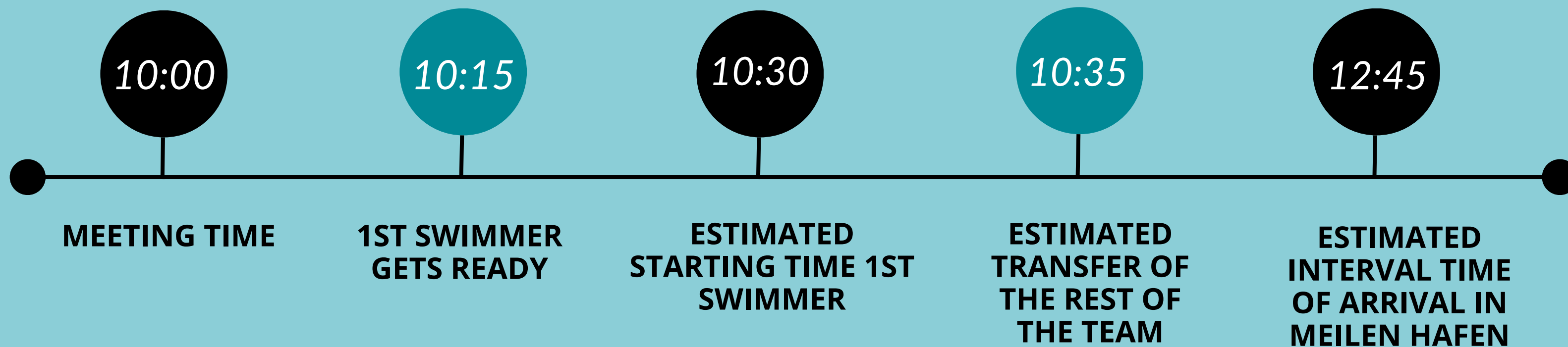
- Train station Winkel am Zürichsee (4 min. walk)
- Parking (5 min. walk)

Google Earth view



Wednesday, June 17th

RELAY ERLBACH - MEILEN



**** Time calculated according to the swim times given.
This may vary by +/- 40 min**



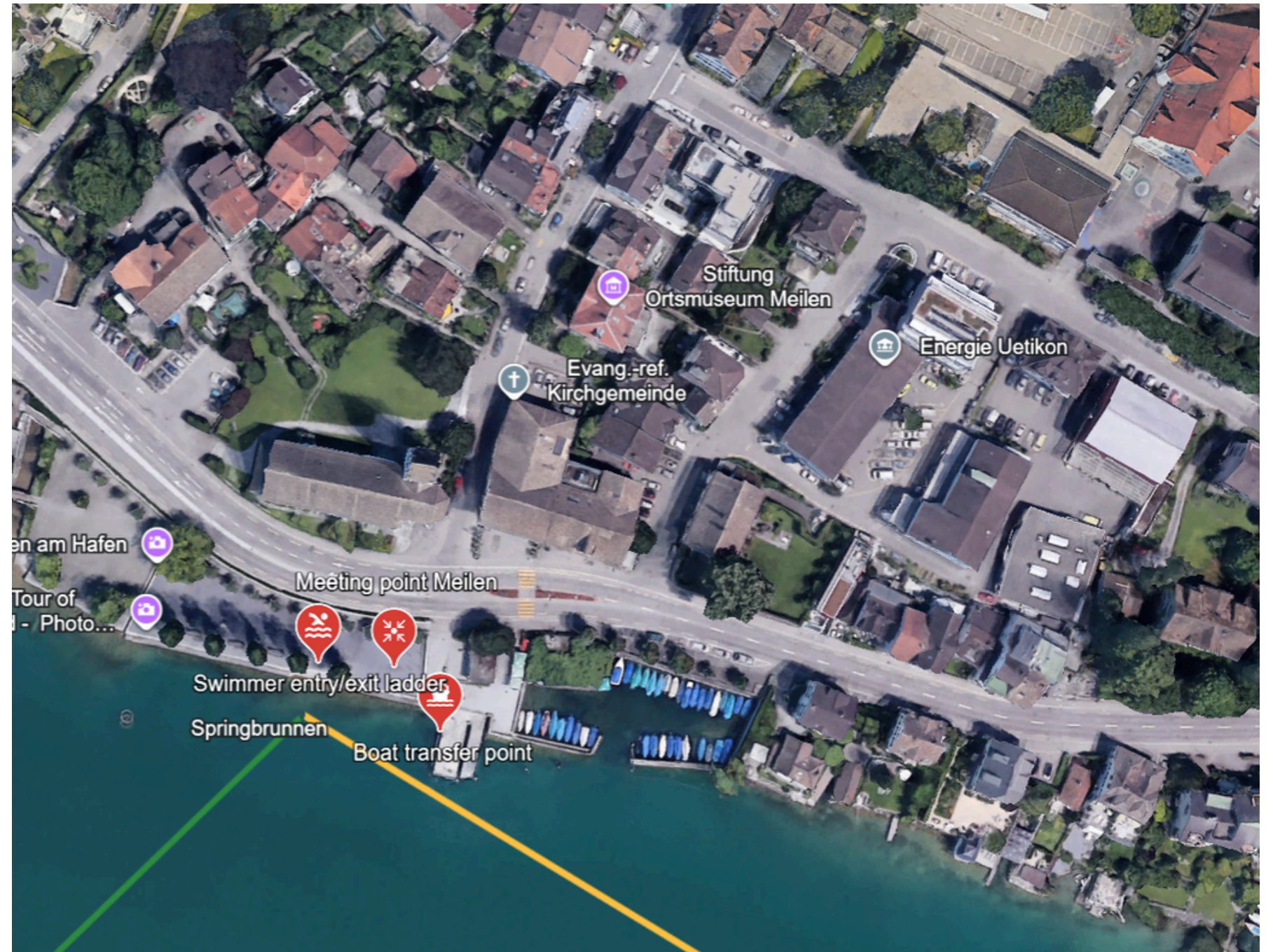
Meeting times do not change

RELAY MEILEN HAFEN → STÄFA HAFEN

Departure from Meilen Hafen

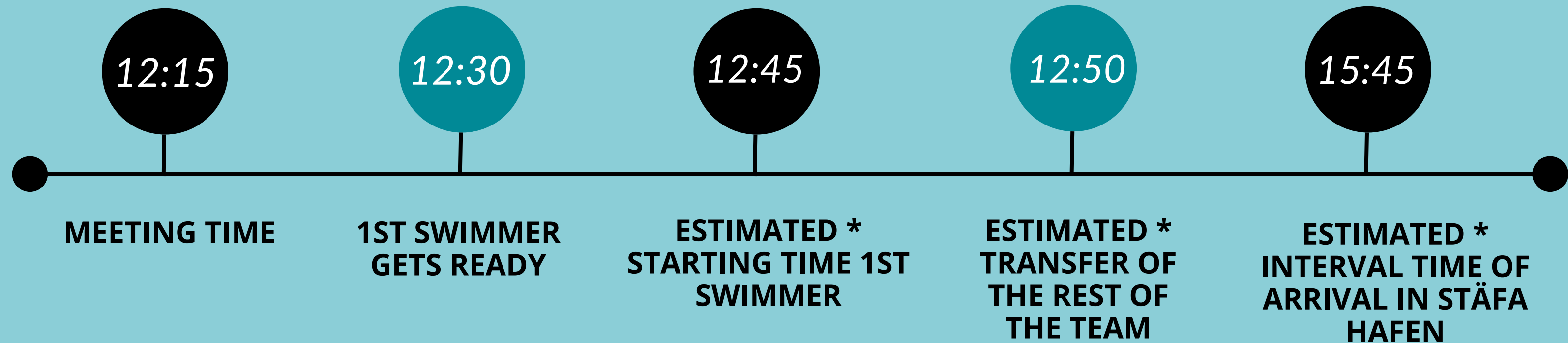
- To the meeting point
- Train station Meilen (6 min. walk)

Google Earth view



Wednesday, June 17th

RELAY MEILEN HAFEN -> STÄFA HAFEN



** Time calculated according to the swim times given.
This may vary by +/- 40 min



Meeting time do not change

RELAY STÄFA HAFEN → RAPPERSWIL

Departure from Stäfa Hafen

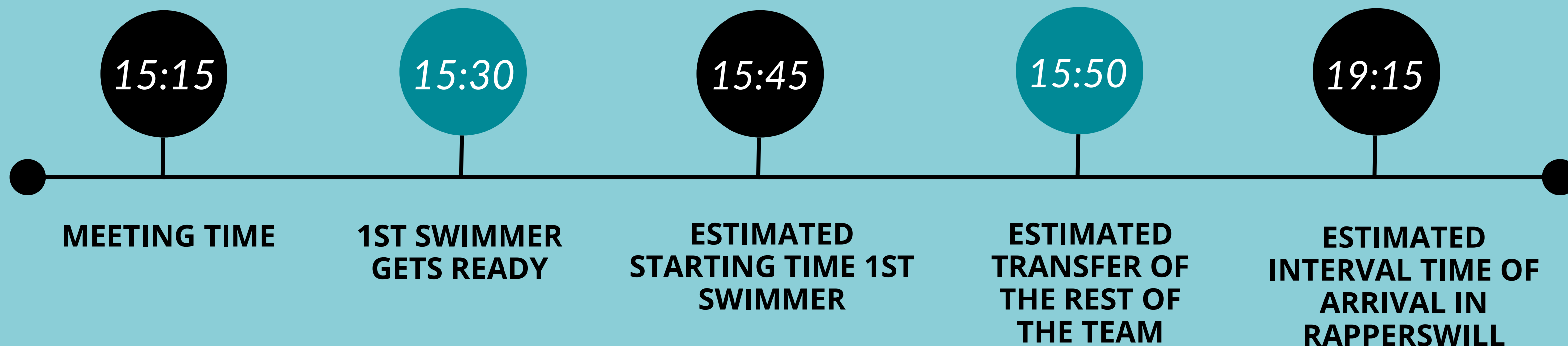
- Train station Stäfa (4 min. walk)
- Parking (6 min walk)

Google Earth view



Wednesday, June 17th

RELAY STÄFA HAFEN – RAPPERSWIL



**** Time calculated according to the swim times given.
This may vary by +/- 40 min**



Meeting time do not change

RELAY STÄFA HAFEN → RAPPERSWIL-JONA

Arrival in Rapperswil-Jona

- Train station Rapperswil (4 min. walk)

Google Earth view

