

# Tuesday, June 23rd

Geneva to Nyon Relay Race



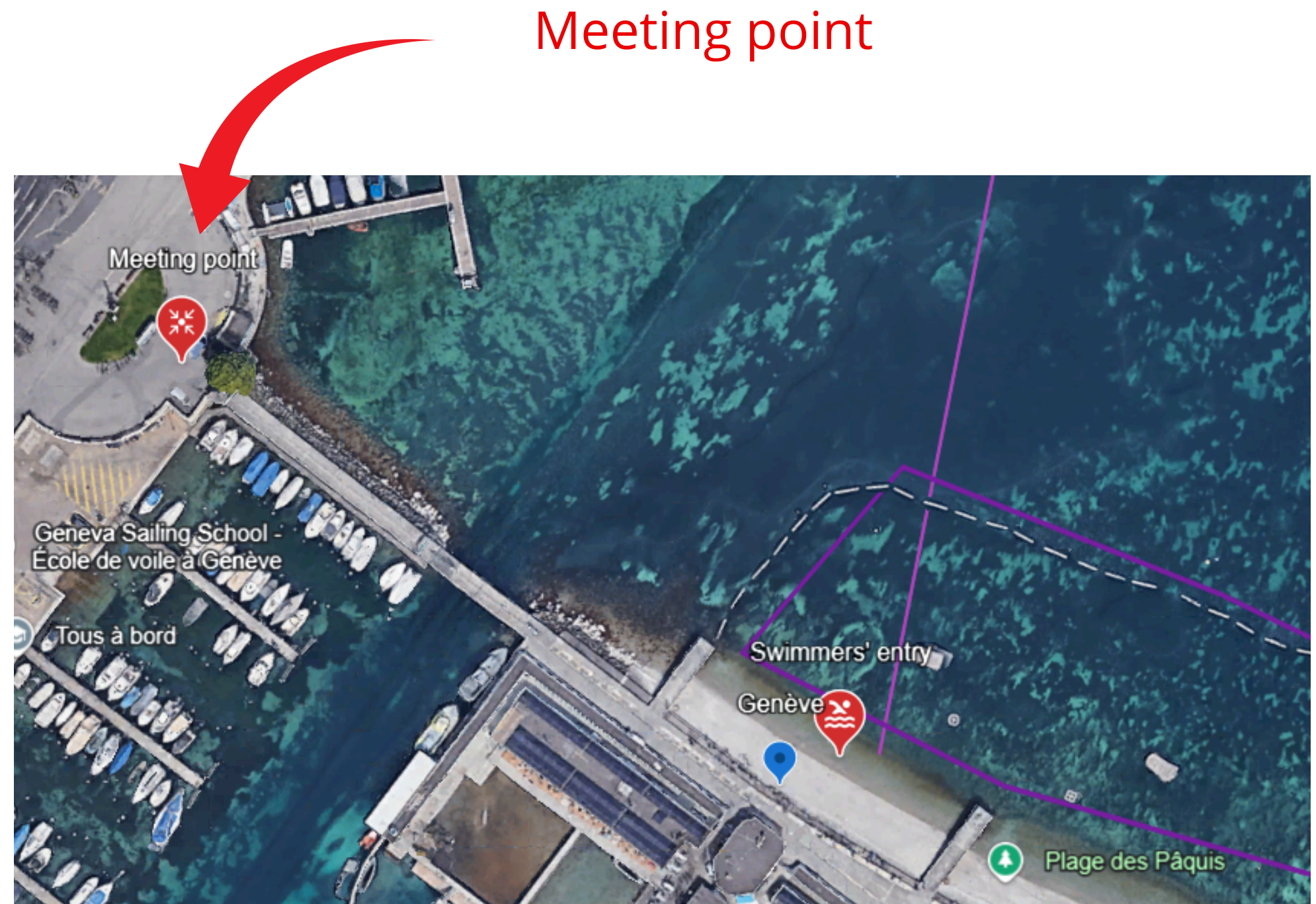
## RELAY GENEVA → NYON

# Departure from Geneva - Bains des Pâquis

- Parking lot at Fairmont Grand Hotel Geneva (1 min. walk)
- Geneva railway station (12 min. walk)

[LINK Google Earth](#)

- **Plan A:** Departure from the entrance of Bains des Pâquis
- **Plan B:** Departure from Perle du Lac (in the event of strong currents)



# Tuesday, June 23rd

TIMETABLE FROM GENEVA TO MIES (10KM)



**THIS YEAR, THE TEAM TRANSFERS WILL OCCUR BETWEEN 6:15 AND 6:45 AM - SWIMMERS ARE EXPECTED TO ARRIVE BY 6:00 AM. IN THE EVENT OF A DELAY, THE SWIMMER WILL BE TRANSFERRED TO THEIR BOAT AT A LATER TIME.**

RELAY MIES → NYON

# Departure from Mies - Tannay Port

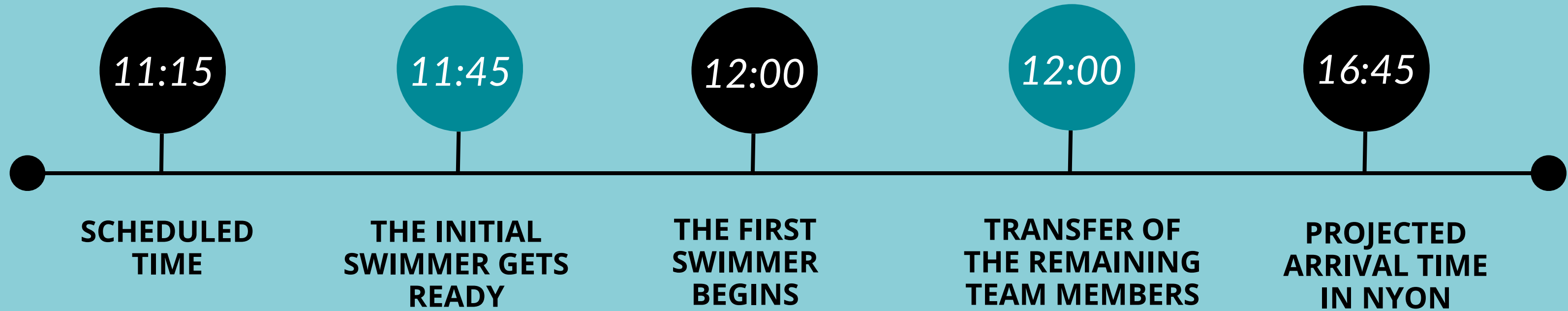
- Parking is available opposite or along the Swiss road, just a 3-minute walk away.
- Tannay railway station (12 min. walk)

[LINK Google Earth](#)



# Tuesday, June 23rd

TIMETABLE FROM MIES TO NYON (9.5 KM)



RELAY MIES → NYON

# Arrival at Nyon Beach

- Nyon railway station (17 min. walk)
- Parking des Pensées (10-minute walk)

[LINK Google Earth](#)

